

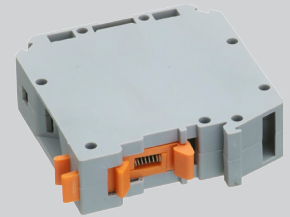
⚠ Important Safety Notice

It is the responsibility of the person installing the electrical equipment to ensure that the installation meets the requirements of the IET wiring regulations and is therefore 'fit for purpose'. Factors such as correct selection of components, cable sizing, protective devices and Earth bonding are all critical and should be checked prior to full testing and power-up. Any other regulations applicable to the equipment being installed such as the Machinery Directive and current health and safety legislation must also be adhered to.

All connections (including factory made) must be checked for the correct tightness prior to commissioning of the electrical installation.

All connections should be checked periodically to ensure correct tightness.

DO NOT USE POWER TOOLS ON THESE PRODUCTS



Technical Data

A versatile range of universal (32/35mm) din rail mounting terminal blocks taking wire from 0.5 to 95mm sq. The flexible foot enables easy mount / dismount from the din rail with a screwdriver. The terminals are available in a variety of colours and take international K (insert type) markers. Also available in blue for easy identification of the neutral connection. Other colours are available on request.

Additional Technical Data

Terminal	CTS2.5UN CTS2.5UNBLUE	CTS4UN CTS4UNBLUE	CTS6UN CTS6UNBLUE	CTS10U CTS10UBLUE	CTS16U CTS16UBLUE
Terminal Pitch	5mm	6mm	8mm	10mm	12mm
Height x Width	45 x 43mm	45 x 43mm	47 x 43mm	47 x 43mm	47 x 43mm
Conductor Capacity	0.5 to 2.5mm ²	0.5 to 4mm ²	1.5 to 6mm ²	1.5 to 10mm ²	2.5 to 16mm ²
Cable Stripped Length	8.5mm	9mm	12mm	12mm	16mm
Insulation Material	Polyamide 6.6				
Mounting	DIN32 / DIN35 / DIN35-15				
End Plate	CTSEP5U / CTSEP5UBLUE		CTSEP2U / CTSEP2UBLUE		Not Required (Intergrated End Plate)
Partition Plate	CTSP5U		CTSP2U		Not Available
10 Way Shorting Links	CA741/10	CA742/10	CA743/10	CA744/10	CA761/10
10 Way Insulated Comb Busbar	Not Available	CA713/10	CA710/10	CA718/10	Not Available
Blank Terminal Markers	CA509/K5	CA509/K6	CA509/K8	CA509/K10	Not Available
Voltage Rating	800V	800V	800V	800V	800V
Current Rating	24A	32A	41A	57A	76A
Torque	0.4Nm	0.5Nm	0.8Nm	1.2Nm	2.0Nm

Terminal	CTS25U CTS25UBLUE	CTS35U CTS35UBLUE	CTS50U CTS50UBLUE	CTS95U CTS95UBLUE
Terminal Pitch	12mm	15mm	20.5mm	25mm
Height x Width	56 x 49.5mm	58 x 52.5mm	75.5 x 71mm	90 x 83mm
Conductor Capacity	6 to 25mm ²	10 to 35mm ²	16 to 50mm ²	16 to 95mm ²
Cable Stripped Length	18mm	18mm	22mm	24mm
Insulation Material	Polyamide 6.6			
Mounting	DIN32 / DIN35 / DIN35-15			
End Plate	CTSEP3U / CTSEP3UBLUE	CTSEP4U / CTSEP4UBLUE	Not Required (Intergrated End Plate)	
Partition Plate	CTSP3U	CTSP4U	Not Available	
10 Way Shorting Links	CA745/10	CA746/10		
Blank Terminal Markers	CA509/K12	CA509/K15		
Voltage Rating	800V	800V	100V	1000V
Current Rating	101A	125A	150A	232A
Torque	2.0Nm	2.5Nm	6.8Nm	18.2Nm